

EDWIN XP  
ELECTRONIC DESIGNER FOR WINDOWS



# Layout DXF Export

***VISIONICS***

© Norlinvest Ltd, BVI. Visionics is a trade name of Norlinvest Ltd. All Rights Reserved. No part of the Layout DXF Export document can be reproduced in any form or by any means without the prior written permission of Visionics. Layout DXF Export document is subjected to change without notice. Visionics will make changes in a manner that will not affect dependent systems.

Unauthorized duplication, in whole or part, of this document by any means, mechanical or electronic, including translation into another language, except for brief excerpts in published reviews, is prohibited without the express written permission of Visionics.

Visionics, EDWinXP, Docone, EDComX, SimWinXP and Mixed Mode Simulator and their respective logos are trademarks or registered trademarks of Visionics. Unauthorized duplication of this work may also be prohibited by local statute.

Disclaimer: Information in this publication is subject to change without notice and does not represent a commitment on the part of Visionics. The information contained herein is the proprietary and confidential information of Visionics or its licensors, and is supplied subject to, and may be used only by Visionics's customer in accordance with, a written agreement between Visionics and its customer. Except as may be explicitly set forth in such agreement, Visionics does not make, and expressly disclaims, any representations or warranties as to the completeness, accuracy or usefulness of the information contained in this document. Visionics does not warrant that use of such information will not infringe any third party rights, nor does Visionics assume any liability for damages or costs of any kind that may result from use of such information.

## **Contents**

Layout DXF Export .....	3
Invoking Layout DXF Export.....	4

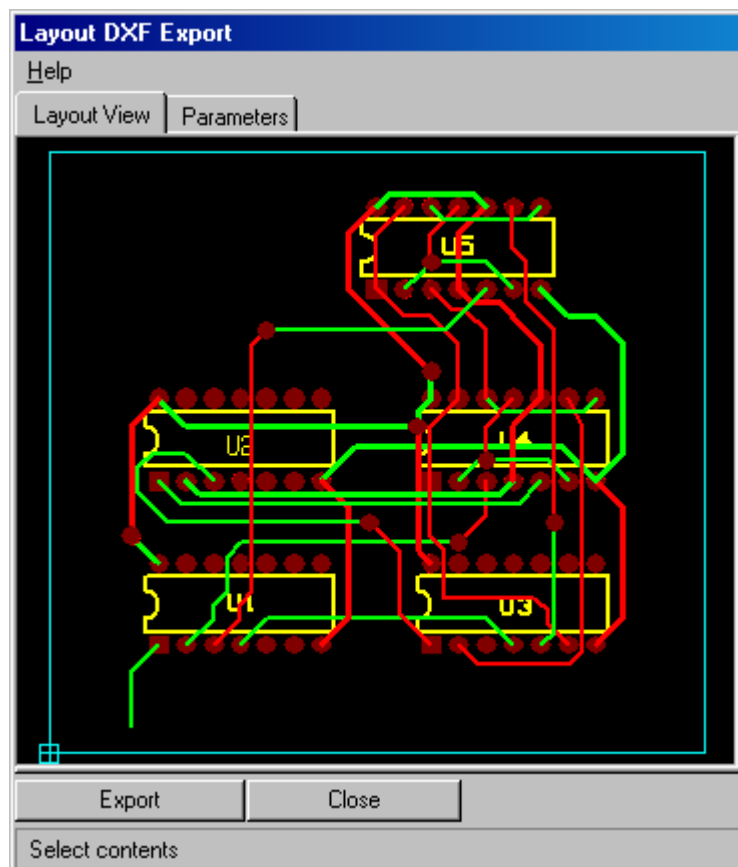
## Layout DXF Export

The Layout DXF Export is an application that allows exporting the layout graphics to AutoCAD DXF format. The DXF file is an ASCII file containing necessary vectorial information of the entities present in the layout. The necessary graphics like copper, texts, traces, 3D-information etc must be selected exclusively from the Parameters tab to export to AutoCAD DXF format.

### Invoking Layout DXF Export

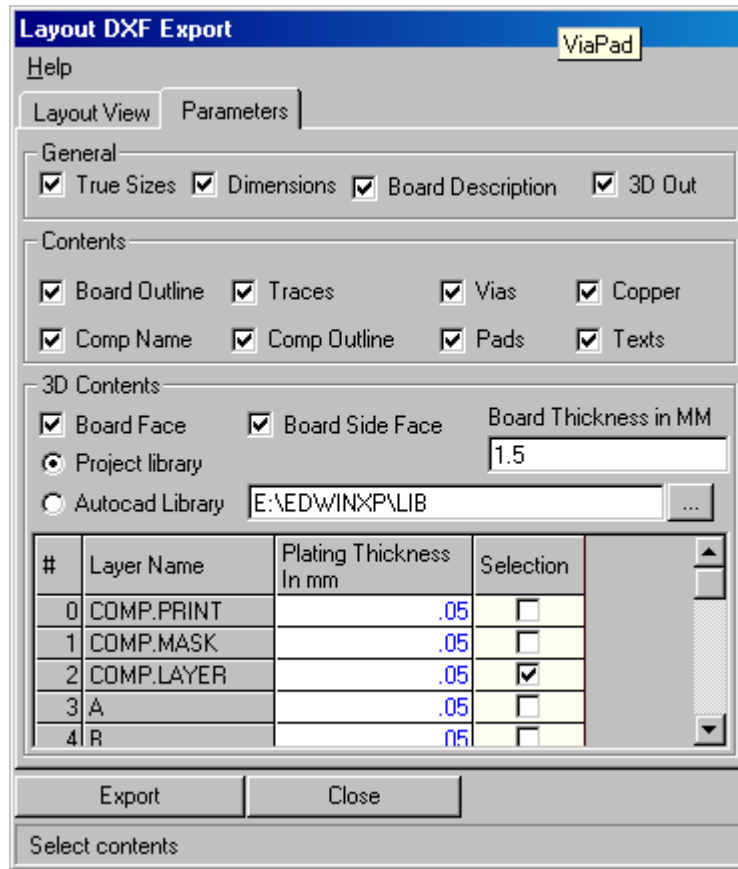
This module may be invoked from Project Explorer in the following ways.

- Right click **PCB Layout** and select Layout **DXF Export** from the list.
- Select Layout **DXF Export** from the tasklist or from the task toolbar.



**Note:** By default, system does not display the task toolbar. It may be enabled from View menu in the Project Explorer. The Layout DXF Export window appears as shown below. Here for eg, the Counter.epb has been loaded.

The different parameters can be set in the Parameter setting box.



After setting the required parameters, click on Export in order to export the epb file to dxf. This can be viewed in AutoCAD or some other dxf supporting tool.